

Trimming a cadaver hoof of a chronically foundered pony....



This is the hoof before the trim. You can how the whole foot has been stretched forward. This has happened over months, probably years, in which this pony's feet were neglected and allowed to grow while the pony was denied the ability to wear them down and keep them in trim.

Here's the foot from a lateral perspective, after its been trimmed. The heels are still a bit long in my view but if it was alive I'd be returning in a week or so.

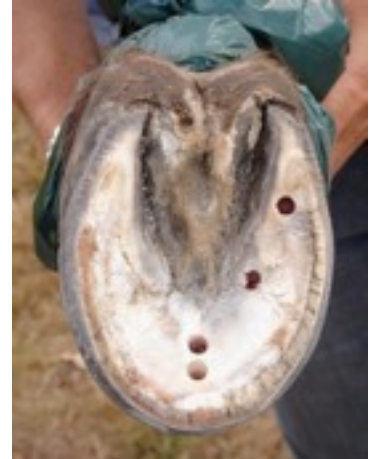


At left is a photo of the trimmed hoof. This view shows more clearly where I've brought the heels down to.

Why does it have holes drilled in it?

Trimming a cadaver hoof of a chronically foundered pony....

This photo shows a solar view. The pic on the right shows where we drilled to ascertain the position of the pedal/coffin bone (P3). (Don't try this on a live horse!) The drilled hole nearest the toe is clear of the distal edge of P3. The one directly behind it (and ahead of where we have dug the apex of the frog, is right on the tip of the bone. The drill hole nearest the collateral groove is into P3. And the last hole we drilled, near the heel buttress connected with the palmar process of P3.



This was an exercise to see how far back we could bring this pony's breakover, to bring P3 into a position closer to ground parallel (optimum being 3 or 4 degrees to parallel).

A pony trimmed in this manner would require pads and boots, a low carb but high forage diet, and regular hand walking to promote circulation in his hooves and thus promote healing.

Radiographs would have revealed the degree of rotation. They would also have helped guide the trimmer who could have correlated the tip of P3 with a radiographic marker placed at the true apex of the frog.

This pony didn't come with radiographs.....